

Mosbaek Family Endowment

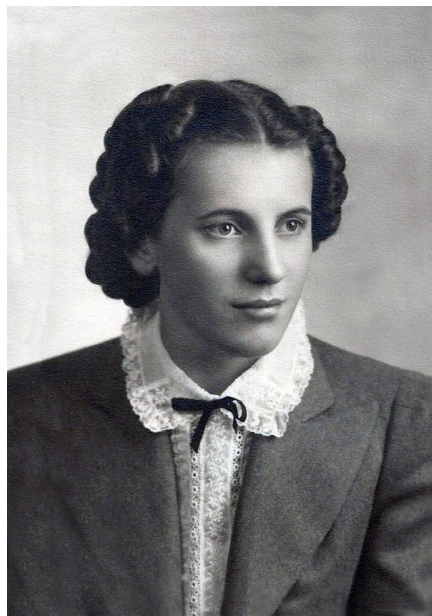
The Mosbaek Family can trace its Lake Region State College linkages to the institution's opening in the fall of 1941. Amy Pulst Mosbaek (at right) was one of thirty-eight full-time students who made up the college's first class. Classes were held in the Pershing Building, the decommissioned old high school, located next to the community's new Central High School. Opening day was exciting for Amy because it represented her opportunity to get an education and build a career. In May of 1942, Amy graduated with an Associate Degree in Business and accepted employment as a bookkeeper at First National Bank in Devils Lake.

In 2015, the college kicked off its seventy-fifth anniversary celebration at its

annual Key Event gala. Amy represented the college's first class and told some delightful stories about life

as a student in 1941. Throughout the year, Amy was a special guest at several celebrations and always encouraged the community to appreciate the foresight of those who struggled to build the college and those who have helped it succeed.

In 1945, Amy Pulst and Elmer Mosbaek were married and made their home in the Garske, North Dakota, community. Amy redirected her management skills to support farming and family needs. Their son, Allan, was born in 1948 and enjoyed all the advantages of growing up on a family farm. His college experience did not include LRSC, but curiously, Nancy (left)



forged a connection to Alan's hometown college. Nancy Lee Gross grew up in Casselton, North Dakota, and graduated from Saint Luke's School of Nursing (Fargo ND) in 1970. Allan was also a student in Fargo, at North Dakota State University, and fortunately their paths crossed. They were married in 1970. From 1973 to 1985, Nancy worked as registered nurse at Mercy hospital in Devils Lake. She took advantage of distance education opportunities and enrolled in IVN (interactive video network) courses at LRSC through which she completed a baccalaureate

degree in nursing (BSN) from Minot State University, in 1987. Always an energetic learner, Nancy completed a Master in Nursing (1994) and a Ph.D. in Education (2000) from UND. Nancy served as an adjunct nursing instruc-

tor at LRSC while also working at the local hospital. In 2004, Nancy accepted an appointment by the Governor of Kansas to serve as Nursing Educa-

tion Specialist for the Kansas State Board of Nursing, a position she held until ill health forced her retirement in 2009. Nancy died of cancer in January 2011.

Allan and Amy worked together to launch the Mosbaek Family Endowment. They wanted to give back to the college and community which have been so core to their own lives. They also hope this scholarship will help to open educational opportuni-

ties for others. Allan and Nancy's three children and their spouses—David (Andrea) Mosbaek, Susan (Robert) Dreyfus, and Beth (Jon) Eide—and seven grandchildren share this aspiration. ●



Amy and Alan were guests at the college's 75th anniversary party, the Diamonds are Forever Key Event. Amy represented the Class of 1941 which was inducted into the LRSC Hall of Fame that evening.

